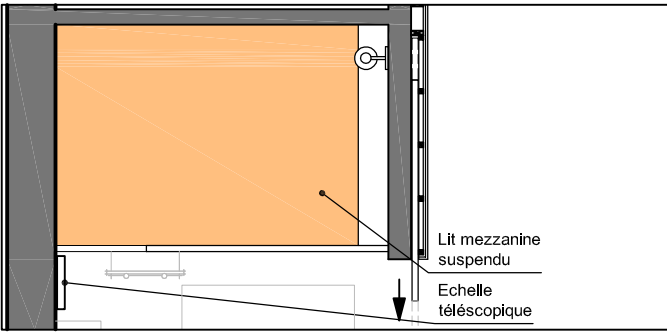


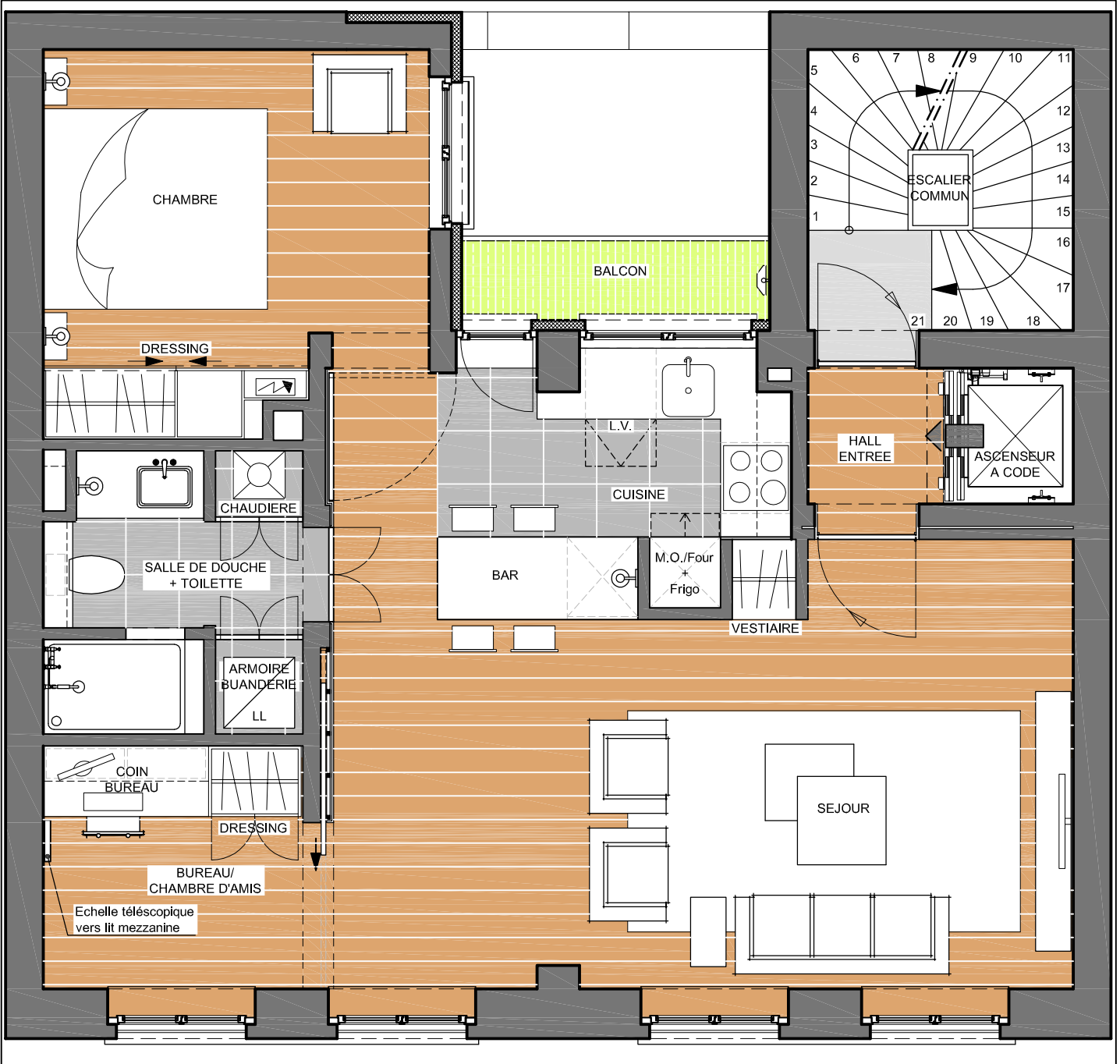
2EME ETAGE
 RUE VEYDT N°58 - 1050 BRUXELLES
APPARTEMENT 2

2EME ETAGE
 SCHEMA DE PRINCIPE
 SURFACE STUDIO = 61,62 m²
 SURFACE BALCON = 1,85 m²
 SURFACE COMMUNS = 9,30 m²

2EME ETAGE



LIT MEZZANINE



DOSSIER N°: 2013-250
 DATE: 02/11/2016
 ECHELLE: 1/50
 FORMAT: A4



A.D.A. S.P.R.L.
 AV. HENRI DE BROUCKERE 44-46
 1160 BRUXELLES BELGIUM
 TEL.: 32-2-739 10 80
 FAX: 32-2-739 10 81
 E-MAIL: JJJ@ADA.BE